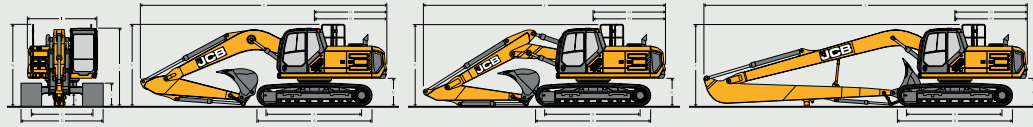


SPECIFICATION 210X LC/SC, 220X LC/SC/SLC

STATIC DIMENSIONS



STATIC DIMENSIONS

Model		210X LC, 220X LC	220X SLC	210X SC, 220X SC		
A	Track length on ground	mm 3660	3660	3370		
B	Undercarriage overall length	mm 4460	4460	4170		
C	Track gauge	mm 2390	2170	2170		
D	Width over tracks (500mm trackshoes)	mm 2890	2670	2670		
D	Width over tracks (600mm trackshoes)	mm 2990	2770	2770		
D	Width over tracks (700mm trackshoes)	mm 3090	2870	2870		
D	Width over tracks (800mm trackshoes)	mm 3190	2970	2970		
D	Width over tracks (900mm trackshoes)	mm 3290	-	-		
G	Counterweight clearance	mm 1077	1077	1077		
H	Tail length	mm 2813	2813	2813		
I	Overall width of superstructure	mm 2698	2698	2698		
I	Overall width of superstructure (with SPS)	mm 2828	2828	2828		
J	Height over cab	mm 3020	3020	3020		
J	Height over XD guard	mm 3120	3120	3120		
J	Height over cab (vanilla guard - optional)	mm 3330	3330	3330		
K	Ground clearance	mm 485	485	485		
L	Track height	mm 885	885	885		
M	Tail swing radius	mm 2846	2846	2846		
N	Overall height of upper structure	mm 3170	3170	3170		
		Mono	T.A.B.	LR		
Dipper lengths						
		2.4m	3.0m	2.4m	3.0m	6.4m
E	Transport length	mm 9624	9562	9622	9409	12546
F	Transport height (handrail folded - optional) *	mm 3200	3086	3266	3152	3079
F	Transport height (fixed handrail - standard)	mm 3200	3170	3266	3170	3170

ENGINE

Model	JCB EcoMAX Tier 4 Final / IV.
Type	4 stroke, 4 cylinder in-line, direct injection, turbocharged diesel.
Rated power (net)	129 kW (173 hp).
Piston displacement	4.8 litres.
Air filtration	Dry element with in cab warning indicator.
Starting system	24 volt.
Batteries	2 x 12 volt.
Alternator	28 volt - 100 ampere.
Maximum torque	690 Nm @ 1500 rpm.
Bore and stroke	106 x 135 mm.

SWING SYSTEM

Swing motor	Axial piston type.
Swing brake	Hydraulic braking plus automatic spring applied disc type parking brake.
Swing torque	68.7 kNm.
Swing speed	11.0 rpm.
Swing gear	Large diameter, internally toothed fully sealed grease bath lubricated.
Swing lock	Switchable brake in cab.

* includes FOPS guard / XD FOPS guard.

SPECIFICATION 210X LC/SC, 220X LC/SC/SLC

TRACK DRIVE

Type	Fully hydrostatic, two speed with auto shift.
Travel motors	Variable swash axial piston type, fully guarded within undercarriage frame.
Final drive	Planetary reduction, ball-on sprockets.
Service brake	Hydraulic counter balance valve.
Park brake	Disc type, spring applied, automatic hydraulic release.
Gradeability	70% (35°) continuous.
Travel speed	High - 5.7 km/h. Low - 3.2 km/h.
Tractive effort	207.5 kNm.

SERVICE CAPACITIES

Fuel tank	Litres	3370	387
Engine coolant	Litres	38	38
Engine oil	Litres	20.4	20.4
Swing reduction gear	Litres	8	8
Track reduction gear (each side)	Litres	3.5	3.5
Hydraulic system	Litres	250	250
Hydraulic tank	Litres	120	120
DEF fluid	Litres	47.7	47.7

UNDERCARRIAGE

Carrriage options	SC - Standard, LC - Long Carrriage, SLC - Standard Long Carrriage.																																																						
Construction	Fully welded 'X' frame type with central bellyguarding and sloping sumpmembers with dirt relief holes under top rollers.																																																						
Recovery point	Front and rear.																																																						
Upper and lower rollers	Heat treated, sealed and lubricated.																																																						
Track adjustment	Grease cylinder type.																																																						
Track idler	Sealed and lubricated, with spring cushioned recoil.																																																						
Track type	Sealed and lubricated.																																																						
Track shoe options	<table border="1"> <thead> <tr> <th></th> <th>500mm</th> <th>600mm</th> <th>700mm</th> <th>800mm</th> <th>900mm</th> </tr> </thead> <tbody> <tr> <td>SC</td> <td>SC</td> <td>SC</td> <td>SC</td> <td>SC</td> <td>-</td> </tr> <tr> <td>LC</td> <td>LC</td> <td>LC</td> <td>LC</td> <td>LC</td> <td>LC</td> </tr> <tr> <td>SLC</td> <td>SLC</td> <td>SLC</td> <td>SLC</td> <td>SLC</td> <td>-</td> </tr> <tr> <td></td> <td colspan="2">LC, SLC</td> <td colspan="3">SC</td> </tr> <tr> <td>No. of upper rollers (per side)</td> <td colspan="2">2</td> <td colspan="3">2</td> </tr> <tr> <td>No. of lower rollers (per side)</td> <td colspan="2">8</td> <td colspan="3">7</td> </tr> <tr> <td>No. of track guides (per side)</td> <td colspan="2">2</td> <td colspan="3">2</td> </tr> <tr> <td>No. of track shoes (per side)</td> <td colspan="2">49</td> <td colspan="3">46</td> </tr> </tbody> </table>		500mm	600mm	700mm	800mm	900mm	SC	SC	SC	SC	SC	-	LC	LC	LC	LC	LC	LC	SLC	SLC	SLC	SLC	SLC	-		LC, SLC		SC			No. of upper rollers (per side)	2		2			No. of lower rollers (per side)	8		7			No. of track guides (per side)	2		2			No. of track shoes (per side)	49		46		
	500mm	600mm	700mm	800mm	900mm																																																		
SC	SC	SC	SC	SC	-																																																		
LC	LC	LC	LC	LC	LC																																																		
SLC	SLC	SLC	SLC	SLC	-																																																		
	LC, SLC		SC																																																				
No. of upper rollers (per side)	2		2																																																				
No. of lower rollers (per side)	8		7																																																				
No. of track guides (per side)	2		2																																																				
No. of track shoes (per side)	49		46																																																				

SOUND LEVEL

Operator Sound Pressure Level - ISO 6396: 2008	67 dB LpA
External Sound Pressure Level - ISO 6396: 2008 & EU Directive 2000/14/EC	102 dB LWA

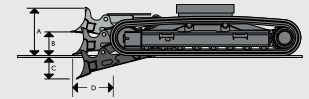
HYDRAULIC SYSTEM

Pumps	
Main pumps	2 variable displacement axial piston type.
Maximum flow	2 x 228 l/min.
Servo pump	Gear type.
Servo pump maximum flow	16 l/min.
Control valve	
A combined four and five spool control valve with auxiliary service spool as standard.	
Relief valve settings	
Boom/Arm/Bucket	343 bar.
With power boost	373 bar.
Swing circuit	250 bar.
Travel circuit	343 bar.
Pilot control	39 bar.
Filtration	
In tank	105 micron, suction strainer.
Main return line	10 micron, glass fibre element.
Pilot drain line	10 micron, glass fibre element.
Pilot line	10 micron, glass fibre element.
Hydraulic hammer return	10 micron, reinforced microform element.

Hydraulic cylinders

	Quantity	Bore mm	Rod diameter mm
Boom	2	125	85
Arm	1	130	95
Bucket	1	115	85
LR Bucket	1	95	70
TAB position	1	140	95

OPTIONAL BLADE - 220X LC



A	Blade height	mm	600
B	Blade lift above ground	mm	410
C	Blade cut below ground	mm	440
D	Blade forward of track	mm	567
	Dozer width - 600mm tracks	mm	2990
	Dozer width - 700mm tracks	mm	3110
Additional machine weight with blade			
	600mm tracks	kg	1588
	700mm tracks	kg	1602

SPECIFICATION 210X LC/SC, 220X LC/SC/SLC

BUCKET AND ARM COMBINATION - MONOBOOM																
Bucket options	GP Bucket						HD Bucket									
Bucket width	mm	600	700	900	1100	1200	1350	1500	600	750	900	1100	1200	1350	1500	
Bucket capacity	m ³	0.38	0.51	0.66	0.81	0.95	1.10	1.25	0.38	0.52	0.66	0.81	0.95	1.11	1.25	
Bucket weight	kg	506	565	637	691	763	817	889	544	610	691	752	813	894	955	
210X SC																
2.4m Quickhitch (No Quickhitch)	☐ (☐)	☐ (☐)	☐ (☐)	☐ (☐)	☐ (☐)	☐ (☐)	☐ (☐)	☐ (☐)	☐ (☐)	☐ (☐)	☐ (☐)	☐ (☐)	☐ (☐)	☐ (☐)	☐ (☐)	☐ (☐)
3.0m Quickhitch (No Quickhitch)	☐ (☐)	☐ (☐)	☐ (☐)	☐ (☐)	☐ (☐)	☐ (☐)	☐ (☐)	☐ (☐)	☐ (☐)	☐ (☐)	☐ (☐)	☐ (☐)	☐ (☐)	☐ (☐)	☐ (☐)	☐ (☐)
210X LC																
2.4m Quickhitch (No Quickhitch)	☐ (☐)	☐ (☐)	☐ (☐)	☐ (☐)	☐ (☐)	☐ (☐)	☐ (☐)	☐ (☐)	☐ (☐)	☐ (☐)	☐ (☐)	☐ (☐)	☐ (☐)	☐ (☐)	☐ (☐)	☐ (☐)
3.0m Quickhitch (No Quickhitch)	☐ (☐)	☐ (☐)	☐ (☐)	☐ (☐)	☐ (☐)	☐ (☐)	☐ (☐)	☐ (☐)	☐ (☐)	☐ (☐)	☐ (☐)	☐ (☐)	☐ (☐)	☐ (☐)	☐ (☐)	☐ (☐)
220X SC																
2.4m Quickhitch (No Quickhitch)	☐ (☐)	☐ (☐)	☐ (☐)	☐ (☐)	☐ (☐)	☐ (☐)	☐ (☐)	☐ (☐)	☐ (☐)	☐ (☐)	☐ (☐)	☐ (☐)	☐ (☐)	☐ (☐)	☐ (☐)	☐ (☐)
3.0m Quickhitch (No Quickhitch)	☐ (☐)	☐ (☐)	☐ (☐)	☐ (☐)	☐ (☐)	☐ (☐)	☐ (☐)	☐ (☐)	☐ (☐)	☐ (☐)	☐ (☐)	☐ (☐)	☐ (☐)	☐ (☐)	☐ (☐)	☐ (☐)
220X LC																
2.4m Quickhitch (No Quickhitch)	☐ (☐)	☐ (☐)	☐ (☐)	☐ (☐)	☐ (☐)	☐ (☐)	☐ (☐)	☐ (☐)	☐ (☐)	☐ (☐)	☐ (☐)	☐ (☐)	☐ (☐)	☐ (☐)	☐ (☐)	☐ (☐)
3.0m Quickhitch (No Quickhitch)	☐ (☐)	☐ (☐)	☐ (☐)	☐ (☐)	☐ (☐)	☐ (☐)	☐ (☐)	☐ (☐)	☐ (☐)	☐ (☐)	☐ (☐)	☐ (☐)	☐ (☐)	☐ (☐)	☐ (☐)	☐ (☐)
220X SLC																
2.4m Quickhitch (No Quickhitch)	☐ (☐)	☐ (☐)	☐ (☐)	☐ (☐)	☐ (☐)	☐ (☐)	☐ (☐)	☐ (☐)	☐ (☐)	☐ (☐)	☐ (☐)	☐ (☐)	☐ (☐)	☐ (☐)	☐ (☐)	☐ (☐)
3.0m Quickhitch (No Quickhitch)	☐ (☐)	☐ (☐)	☐ (☐)	☐ (☐)	☐ (☐)	☐ (☐)	☐ (☐)	☐ (☐)	☐ (☐)	☐ (☐)	☐ (☐)	☐ (☐)	☐ (☐)	☐ (☐)	☐ (☐)	☐ (☐)

☐ = Suitable for general excavating materials up to 2000kg/m³.
 ■ = Suitable for light excavating materials up to 1600kg/m³.
 ● = Suitable for grading and loading materials up to 1200kg/m³.
 These recommendations are given as a guide based on typical operating conditions.
 Please contact your distributor for the correct selection of buckets and attachments to suit the application.

WEIGHTS AND GROUND BEARING PRESSURES					
Figures include: 1.1m ³ bucket, 778kg, operator, full fuel tank and 2.4m dipper.					
	500mm shoes	600mm shoes	700mm shoes	800mm shoes	900mm shoes
210X SC Monoboomb					
Machine weight	kg	21602	21838	22094	22406
Ground bearing pressure	kg/cm ²	0.56	0.47	0.41	0.36
210X LC Monoboomb					
Machine weight	kg	22037	22288	22561	22891
Ground bearing pressure	kg/cm ²	0.53	0.44	0.39	0.34
220X SC Monoboomb					
Machine weight	kg	22502	22738	22994	23306
Ground bearing pressure	kg/cm ²	0.58	0.49	0.42	0.37
220X SC T.A.B.					
Machine weight	kg	23218	23455	23710	24023
Ground bearing pressure	kg/cm ²	0.60	0.50	0.44	0.39

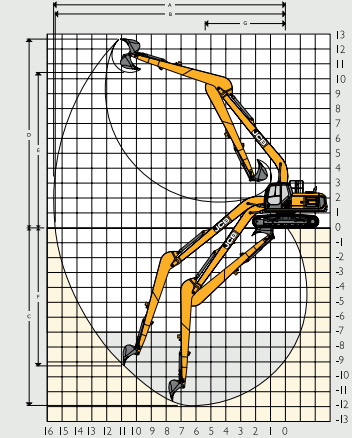
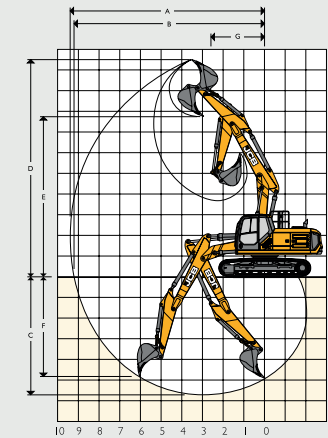
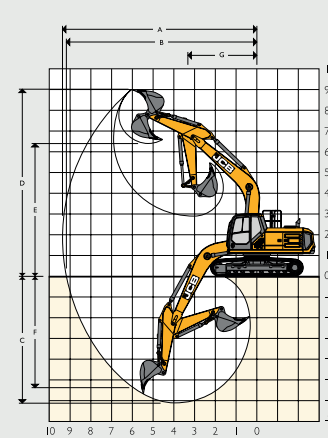
WEIGHTS AND GROUND BEARING PRESSURES					
Figures include: 1.1m ³ bucket, 778kg, operator, full fuel tank and 2.4m dipper.					
	500mm shoes	600mm shoes	700mm shoes	800mm shoes	900mm shoes
220X SLC Monoboomb					
Machine weight	kg	22730	23002	23275	23605
Ground bearing pressure	kg/cm ²	0.54	0.46	0.40	0.35
220X LC Monoboomb					
Machine weight	kg	22937	23188	23461	23791
Ground bearing pressure	kg/cm ²	0.55	0.46	0.40	0.36
220X LC T.A.B.					
Machine weight	kg	23653	23905	24177	24508
Ground bearing pressure	kg/cm ²	0.57	0.48	0.41	0.37
220X LC LR					
Machine weight	kg	23461	23712	23985	24315
Ground bearing pressure	kg/cm ²	0.56	0.47	0.41	0.36

SPECIFICATION 210X LC/SC, 220X LC/SC/SLC

WORKING RANGE - MONOBOOM 5.7M			
Dipper length:	2.4m	3.0m	
A Maximum digging reach	mm	9361	9859
B Maximum digging reach (on ground)	mm	9171	9679
C Maximum digging depth	mm	6096	6694
D Maximum digging height	mm	9002	9087
E Maximum dumping height	mm	6408	6537
F Maximum vertical wall cut depth	mm	5368	5706
G Minimum swing radius	mm	3331	2884
H Minimum dumping height	mm	2906	2306
Bucket rotation	degrees	183	183
Maximum dipper tearout	kN	126.6	106.1
Maximum bucket tearout	kN	150	150

WORKING RANGE - T.A.B. 5.7M			
Dipper length:	2.4m	3.0m	
A Maximum digging reach	mm	9418	9955
B Maximum digging reach (on ground)	mm	9229	9776
C Maximum digging depth	mm	5716	6297
D Maximum digging height	mm	10514	10890
E Maximum dumping height	mm	7742	8120
F Maximum vertical wall cut depth	mm	4841	5418
G Minimum swing radius	mm	2602	2275
H Minimum dumping height	mm	3683	3008
Bucket rotation	degrees	183	183
Maximum dipper tearout	kN	125	103.4
Maximum bucket tearout	kN	148	148

WORKING RANGE - LR 8.7M		
Dipper length:	6.4m	
A Maximum digging reach	mm	15628
B Maximum digging reach (on ground)	mm	15514
C Maximum digging depth	mm	11985
D Maximum digging height	mm	12710
E Maximum dumping height	mm	10451
F Maximum vertical wall cut depth	mm	9307
G Minimum swing radius	mm	5427
H Minimum dumping height	mm	1730
Bucket rotation	degrees	183
Maximum dipper tearout	kN	68.4
Maximum bucket tearout	kN	95.8



Working dimensions calculated using 980/B0092 GP bucket on Monoboomb and T.A.B. and 980/A0391 GP bucket on LR.

SPECIFICATION 210X LC/SC, 220X LC/SC/SLC

SPECIFICATION 210X LC/SC, 220X LC/SC/SLC

LIFT CAPACITIES – DIPPER LENGTH: 3.0M, MONOBOOM: 5.7M, TRACKSHOES: 500MM, NO BUCKET											210X LC MONO	
Reach	3m		4.5m		6m		7.5m		Capacity at Max. Reach			
Load Point Height	kg	kg	kg	kg	kg	kg	kg	kg	kg	kg	mm	
7.5m					5300*	4670*			3980*	3980*	6235	
6m									3730*	3670	7339	
4.5m												
3m	12250*	12250*	7800*	7320	4760	5320	3380	3810*	2820		8374	
1.5m												
0m	6500*	6500*	10560*	6470	7060	4310	5070	3150	4410	2750	8255	
- 1.5m	10820*	10820*	10750*	6360	6970	4220	5030	3120	4790	2980	7767	
- 3m	14570*	13540	10170*	6420	7000				5690	3520	6923	
- 4.5m	11880*	11880*	8450*	6630					4500*	4920	5562	

LIFT CAPACITIES – DIPPER LENGTH: 3.0M, MONOBOOM: 5.7M, TRACKSHOES: 500MM, NO BUCKET											220X SC MONO	
Reach	3m		4.5m		6m		7.5m		Capacity at Max. Reach			
Load Point Height	kg	kg	kg	kg	kg	kg	kg	kg	kg	mm		
7.5m												
6m					5400*	5080			5600*	5600*	5539	
4.5m			6860*	6860*	5860*	4940			5280	3470	7491	
3m			8670*	7080	6650*	4710	5180	3390	4810	3140	7872	
1.5m			10210*	6640	7040	4490	5080	3290	4660	3020	7954	
0m			10710*	6440	6880	4350	5000	3220	4790	3090	7746	
- 1.5m	10960*	10960*	10670	6410	6840	4310	5070	3220	5270	3390	7223	
- 3m	13500*	13350	9770*	6510	6920				4470	4120	6305	
- 4.5m	10130*	10130*	7170*	6800					6590*	6280	4767	

LIFT CAPACITIES – DIPPER LENGTH: 3.0M, MONOBOOM: 5.7M, TRACKSHOES: 500MM, NO BUCKET											220X SC MONO	
Reach	3m		4.5m		6m		7.5m		Capacity at Max. Reach			
Load Point Height	kg	kg	kg	kg	kg	kg	kg	kg	kg	mm		
7.5m												
6m												
4.5m					5300*	5000	5000*	3500	3980*	3120	8017	
3m	12250*	12250*	7800*	7210	4740	5190	3390	3810*	2840		8374	
1.5m												
0m	6500*	6500*	10560*	6390	6840	4300	4950	3170	4320	2770	8255	
- 1.5m	10820*	10820*	10550	6290	6750	4290	4910	3130	4690	2990	7767	
- 3m	14570*	13030	10170*	6340	6780				5550	3530	6923	
- 4.5m	11880*	11880*	8450*	6540					6500*	4890	5562	



Lift capacity front and rear.



Lift capacity full width.

Notes:
 1. Lifting capacities are based on ISO 10567, that is, 25% of minimum tipping load or 87% of hydraulic lift capacity, whichever is the less. Lifting capacities marked* are based on hydraulic capacity.
 2. Lift capacities assume that the machine is on firm, level ground.
 3. Lift capacities may be limited by local regulations. Please refer to your dealer.

LIFT CAPACITIES – DIPPER LENGTH: 2.4M, T.A.B.: 5.7M, TRACKSHOES: 500MM, NO BUCKET											220X SC T.A.B.	
Reach	3m		4.5m		6m		7.5m		Capacity at Max. Reach			
Load Point Height	kg	kg	kg	kg	kg	kg	kg	kg	kg	mm		
7.5m												
6m												
4.5m												
3m												
1.5m												
0m												
- 1.5m	10420*		10420*	10660*	6340	6880	4300	5010	4260	3330	7291	
- 3m												

LIFT CAPACITIES – DIPPER LENGTH: 3.0M, T.A.B.: 5.7M, TRACKSHOES: 500MM, NO BUCKET											220X SC T.A.B.	
Reach	3m		4.5m		6m		7.5m		Capacity at Max. Reach			
Load Point Height	kg	kg	kg	kg	kg	kg	kg	kg	kg	mm		
7.5m												
6m												
4.5m												
3m												
1.5m												
0m												
- 1.5m	10320*		10320*	10360*	6360	6880	4300	4990	4210	3470	7040	
- 3m	11650*		11650*	8310	6590*	4240						

LIFT CAPACITIES – DIPPER LENGTH: 2.4M, MONOBOOM: 5.7M, TRACKSHOES: 500MM, NO BUCKET											220X LC MONO	
Reach	3m		4.5m		6m		7.5m		Capacity at Max. Reach			
Load Point Height	kg	kg	kg	kg	kg	kg	kg	kg	kg	mm		
7.5m												
6m												
4.5m												
3m												
1.5m												
0m												
- 1.5m	10960*		10960*	10720*	7270	7750	4850	5630	4930	3800	7223	
- 3m	13500*		13500*	9770*	7370	7160*						
- 4.5m	10130*		10130*	7170*	7170*							



Lift capacity front and rear.



Lift capacity full width.

Notes:
 1. Lifting capacities are based on ISO 10567, that is, 25% of minimum tipping load or 87% of hydraulic lift capacity, whichever is the less. Lifting capacities marked* are based on hydraulic capacity.
 2. Lift capacities assume that the machine is on firm, level ground.
 3. Lift capacities may be limited by local regulations. Please refer to your dealer.

SPECIFICATION 210X LC/SC, 220X LC/SC/SLC

SPECIFICATION 210X LC/SC, 220X LC/SC/SLC

LIFT CAPACITIES – DIPPER LENGTH: 3.0M, MONOBOOM: 5.7M, TRACKSHOES: 500MM, NO BUCKET											220X LC MONO	
Reach	3m		4.5m		6m		7.5m		Capacity at Max. Reach			
Load Point Height	kg	kg	kg	kg	kg	kg	kg	kg	kg	kg	mm	
7.5m					4670*	4670*			3980*	3980*	6235	
6m									3730*	3730*	7339	
4.5m					5300*	5300*	5000*	3900	3690*	3480	8017	
3m	12250*	12250*	7800*	7800*	6140*	5290	5370*	3780	3810*	3180	8374	
1.5m			9550*	7560	7030*	5030	5690	3660	4080*	3060	8451	
0m	6500*	6500*	10560*	7250	7690*	4840	5580	3560	4570*	3110	8255	
- 1.5m	10820*	10820*	10750*	7150	7660	4760	5540	3520	5280	3370	7767	
- 3m	14570*	14000	10170*	7200	7530*	4780			6240*	3970	6923	
- 4.5m	11880*	11880*	8450*	7410					6500*	5510	5562	

LIFT CAPACITIES – DIPPER LENGTH: 2.4M, T.A.B.: 5.7M, TRACKSHOES: 500MM, NO BUCKET											220X LC T.A.B.	
Reach	3m		4.5m		6m		7.5m		Capacity at Max. Reach			
Load Point Height	kg	kg	kg	kg	kg	kg	kg	kg	kg	mm		
7.5m			7060*	7060*					7300*	7300*	5459	
6m			7300*	7300*	6450*	5690			5610*	5610*	5628	
4.5m			8350*	8350*	6810*	5520	5460*	3870	4960*	3820	7557	
3m			9760*	7960	7390*	5260	5850	3780	5040*	3460	7935	
1.5m			10690*	7440	7860*	5010	5730	3670	5190	3330	8016	
0m			10660*	7210	7810	4850	5650	3600	5340	3410	7809	
- 1.5m	10420*	10420*	9770*	7180	7400*	4900			5580*	3740	7291	
- 3m			7950*	7300	5810*				5880*	4540	6383	

LIFT CAPACITIES – DIPPER LENGTH: 3.0M, T.A.B.: 5.7M, TRACKSHOES: 500MM, NO BUCKET											220X LC T.A.B.	
Reach	3m		4.5m		6m		7.5m		Capacity at Max. Reach			
Load Point Height	kg	kg	kg	kg	kg	kg	kg	kg	kg	mm		
9m			4470*	4470*					4240*	4240*	4568	
7.5m					4690*	4690*			3520*	3520*	6364	
6m			6070*	6070*	5940*	5820			3260*	3190*	7449	
4.5m	8760*	8760*	7640*	7640*	6380*	5620	5480*	3940	3190*	3190*	8118	
3m			9130*	8170	7040*	5340	5900	3820	3250*	3140	8470	
1.5m			10360*	7570	7640*	5060	5740	3680	3440*	3030	8546	
0m	6040*	6040*	10730*	7230	7810	4850	5630	3570	3790*	3080	8353	
- 1.5m	10320*	10320*	10210*	7180	7640*	4760	5580	3530	4410*	3320	7891	
- 3m	11650*	11650*	8810*	7180	6590*	4790			5040*	3900	7040	



Lift capacity front and rear.



Lift capacity full side.

Notes:
 1. Lifting capacities are based on ISO 10567, that is: 20% of minimum tipping load or 87% of hydraulic lift capacity, whichever is the less. Lifting capacities marked* are based on hydraulic lift capacity.
 2. Lift capacities assume that the machine is on firm, level ground.
 3. Lift capacities may be limited by local regulations. Please refer to your dealer.

LIFT CAPACITIES – DIPPER LENGTH: 2.4M, MONOBOOM: 5.7M, TRACKSHOES: 500MM, NO BUCKET											220X SLC MONO	
Reach	3m		4.5m		6m		7.5m		Capacity at Max. Reach			
Load Point Height	kg	kg	kg	kg	kg	kg	kg	kg	kg	kg	mm	
7.5m					5400*	5400*			5600*	5600*	5539	
6m									5400*	5400*	6760	
4.5m			6860*	6860*	5400*	5120			5860*	5310*	7491	
3m			8670*	7180	6650*	4740	5770	3410	5350	3160	7872	
1.5m			10210*	6690	7440*	4520	5660	3320	5190	3050	7954	
0m			10870*	6490	7740*	4380	5590	3250	5340	3110	7746	
- 1.5m	10960*	10960*	10720*	6460	7690	4340	5660	3220	5890	3410	7223	
- 3m	13500*	13440	9770*	6560	7160*	4420			6630*	4160	6305	
- 4.5m	10130*	10130*	7170*	6850					6590*	6330	4767	

LIFT CAPACITIES – DIPPER LENGTH: 3.0M, MONOBOOM: 5.7M, TRACKSHOES: 500MM, NO BUCKET											220X SLC MONO	
Reach	3m		4.5m		6m		7.5m		Capacity at Max. Reach			
Load Point Height	kg	kg	kg	kg	kg	kg	kg	kg	kg	mm		
7.5m					4670*	4670*			3980*	3980*	6235	
6m									3730*	3730*	7339	
4.5m					5300*	5030	5000*	3530	3690*	3150	8017	
3m	12250*	12250*	7800*	7260	6140*	4770	5370*	3420	3810*	2860	8374	
1.5m			9550*	6740	7030*	4520	5640	3290	4080*	2750	8451	
0m	6500*	6500*	10560*	6430	7690*	4340	5540	3190	4570*	2800	8255	
- 1.5m	10820*	10820*	10750*	6340	7610	4250	5500	3160	5240	3020	7767	
- 3m	14570*	14160	10170*	6390	7530*	4280			6210	3560	6923	
- 4.5m	11880*	11880*	8450*	6590					6500*	4930	5562	

LIFT CAPACITIES – DIPPER LENGTH: 2.4M, MONOBOOM: 5.7M, TRACKSHOES: 600MM, NO BUCKET											220X LC DOZER MONO	
Reach	3m		4.5m		6m		7.5m		Capacity at Max. Reach			
Load Point Height	kg	kg	kg	kg	kg	kg	kg	kg	kg	mm		
7.5m					5400*	5400*			5600*	5600*	5539	
6m									5400*	5400*	6760	
4.5m			6860*	6860*	5860*	5860			5310*	4150	7491	
3m			8670*	8310	6650*	5630	5780*	4060	5450*	3770	7872	
1.5m			10210*	8060	7440*	5410	6120*	3960	5840*	3640	7954	
0m			10870*	7850	7940*	5260	6330*	3900	6080	3730	7746	
- 1.5m	10960*	10960*	10720*	7820	7940*	5220	6300*	3890	6390*	4090	7223	
- 3m	13500*	13500*	9770*	7820	7160*	5300			6630*	4980	6305	
- 4.5m	10130*	10130*	7170*	7170*					6590*	6590*	4767	



Lift capacity front and rear.



Lift capacity full side.

Notes:
 1. Lifting capacities are based on ISO 10567, that is: 20% of minimum tipping load or 87% of hydraulic lift capacity, whichever is the less. Lifting capacities marked* are based on hydraulic lift capacity.
 2. Lift capacities assume that the machine is on firm, level ground.
 3. Lift capacities may be limited by local regulations. Please refer to your dealer.

SPECIFICATION 210X LC/SC, 220X LC/SC/SLC

SPECIFICATION 210X LC/SC, 220X LC/SC/SLC

LIFT CAPACITIES – DIPPER LENGTH: 3.0M, MONOBOOM: 5.7M, TRACKSHOES: 600MM, NO BUCKET											220X LC DOZER MONO	
Reach	3m		4.5m		6m		7.5m		Capacity at Max. Reach			
Load Point Height	kg	kg	kg	kg	kg	kg	kg	kg	kg	kg	mm	
7.5m									3980*	3980*	6235	
6m									3730*	3730*	5739	
4.5m									3690*	3690*	6017	
3m	12250*	12250*	7800*	7800*	5300*	5300*	5000*	4180	3810*	3430	8374	
1.5m									4080*	3310	8451	
0m	6500*	6500*	10560*	7790	5400	5820*	3940	3840	4570*	3370	8255	
- 1.5m	10820*	10820*	10750*	7690	7920*	5130	6190*	3800	5450*	3640	7767	
- 3m	14570*	14570*	10170*	7740	7530*				6240*	4280	6923	
- 4.5m	11880*	11880*	8450*	7950					6500*	5920	5562	

LIFT CAPACITIES – DIPPER LENGTH: 2.4M, T.A.B.: 5.7M, TRACKSHOES: 600MM, NO BUCKET											220X LC DOZER T.A.B.	
Reach	3m		4.5m		6m		7.5m		Capacity at Max. Reach			
Load Point Height	kg	kg	kg	kg	kg	kg	kg	kg	kg	kg	mm	
7.5m									5610*	5610*	5628	
6m									5110*	4880	6833	
4.5m									4960*	4100	7557	
3m									5040*	3720	7935	
1.5m									5330*	3590	8016	
0m									5770*	3680	7809	
- 1.5m	10420*	10420*	10660*	7760	7930*	5220	6140*	3880	5770*	3680	7809	
- 3m									5880*	4630	7291	
									5280*	4880	6383	

LIFT CAPACITIES – DIPPER LENGTH: 3.0M, T.A.B.: 5.7M, TRACKSHOES: 600MM, NO BUCKET											220X LC DOZER T.A.B.	
Reach	3m		4.5m		6m		7.5m		Capacity at Max. Reach			
Load Point Height	kg	kg	kg	kg	kg	kg	kg	kg	kg	kg	mm	
9m									4240*	4240*	4568	
7.5m									3520*	3520*	6364	
6m									3260*	3260*	7449	
4.5m	8760*	8760*	7640*	7640*	6380*	6000	5480*	4220	3190*	3190*	8118	
3m									3250*	3250*	8470	
1.5m									3440*	3270	8546	
0m	6040*	6040*	10360*	7880	7900*	5220	6210*	3850	3790*	3330	8353	
- 1.5m	10320*	10320*	10320*	7670	7640*	5130	5800*	3810	4410*	3590	7971	
- 3m	11650*	11650*	8810*	7730	6590*	5160			5040*	4210	7040	



Lift capacity front and rear.



Lift capacity full width.

- Notes:
- Lifting capacities are based on ISO 10567, that is, 25% of minimum tipping load or 87% of hydraulic lift capacity, whichever is the less. Lifting capacities marked* are based on hydraulic capacity.
 - Lift capacities assume that the machine is on firm, level ground.
 - Lift capacities may be limited by local regulations. Please refer to your dealer.

LIFT CAPACITIES – DIPPER LENGTH: 6.4M, MONOBOOM: 8.7M, TRACKSHOES: 500MM, NO BUCKET																220X LC LR MONO								
Reach	3m		4.5m		6m		7.5m		9m		10.5m		12m		13.5m		Capacity at Max. Reach							
Load Point Height	kg	kg	kg	kg	kg	kg	kg	kg	kg	kg	kg	kg	kg	kg	kg	kg	kg	kg	mm					
11.5m																			1370*	1370*	13801			
10.5m																			1310*	1310*	11627			
9m														2020*	1890			1250*	1250*	12615				
7.5m														2090*	1870			1230*	1230*	13363				
6m														2220*	2220*	2170*	1820	1860*	1380	1220*	1220*	13909		
4.5m														2580*	2580*	2410*	2250	2290*	1730	2220*	1340	1240*	11660	14478
3m	8960*	8960*					4090*	4090*	3370*	3370*	2930*	2720	2640*	2090	2450*	1630	2180	1280	1270*	1080	14478			
1.5m	3210*	3210*	7070*	6520	4970*	4450	3910*	3260	3280*	2490	2880*	1940	2380	1530	2110	1310	1320*	1220*	1070	14523				
0m	3290*	3290*	7600*	5730	5710*	3960	4460*	2940	3620*	2280	3040	1800	2480	1440	2050	1150	1410*	1010	14410					
- 1.5m	4200*	4200*	7280*	5350	6210*	3640	4700	2710	3640	2110	2920	1680	2390	1360	2000	1110	1520*	1020	14138					
- 3m	5350*	5350*	8020*	5210	6280	3470	4540	2570	3520	2000	2830	1600	2340	1310	1980	1090	1680*	1070	13695					
- 4.5m	6660*	6660*	8860*	5220	6220	3420	4470	2500	3460	1940	2790	1560	2320	1290				1910*	1150	13066				
- 6m	8180*	8180*	8520*	5320	6250	3450	4480	2510	3460	1940	2800	1570	2350	1320				2260*	1290	12220				
- 7.5m	9960*	9960*	7900*	5510	6040*	3550	4550	2580	3520	2000	2870	1640						2880	1540	11107				
- 9m	9560*	9560*	6900*	5800	5350*	3750	4260*	2720	3390*	2140								3020*	1980	9636				
- 10.5m									4110*	4060								3040*	2960	7598				



Lift capacity front and rear.



Lift capacity full width.

- Notes:
- Lifting capacities are based on ISO 10567, that is, 25% of minimum tipping load or 87% of hydraulic lift capacity, whichever is the less. Lifting capacities marked* are based on hydraulic capacity.
 - Lift capacities assume that the machine is on firm, level ground.
 - Lift capacities may be limited by local regulations. Please refer to your dealer.